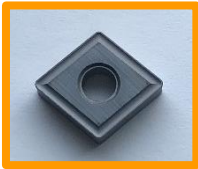
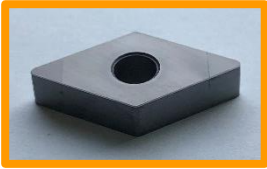


EternAloy® “Hard ‘N Tough”

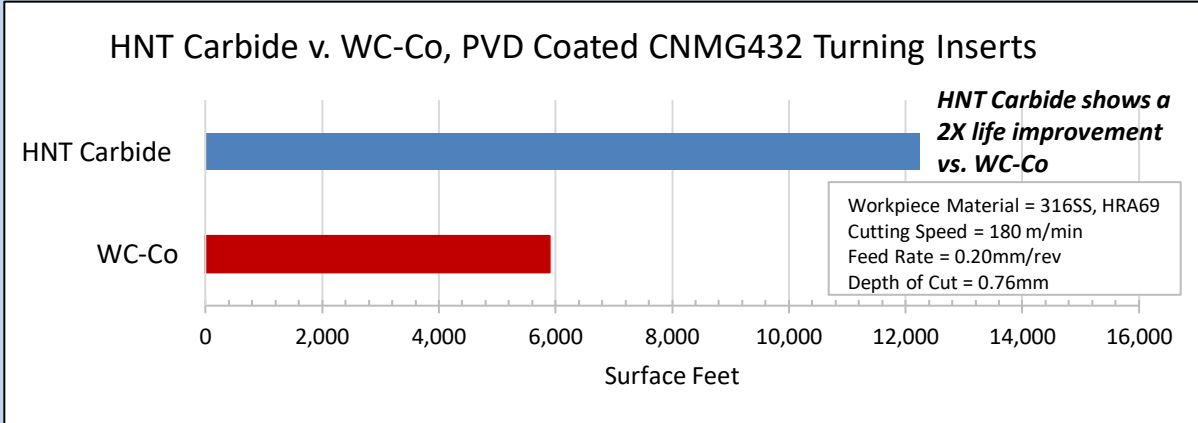
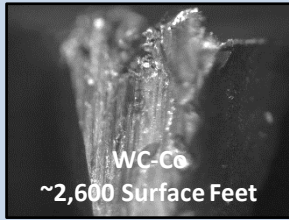
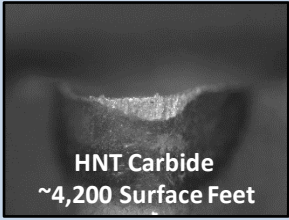
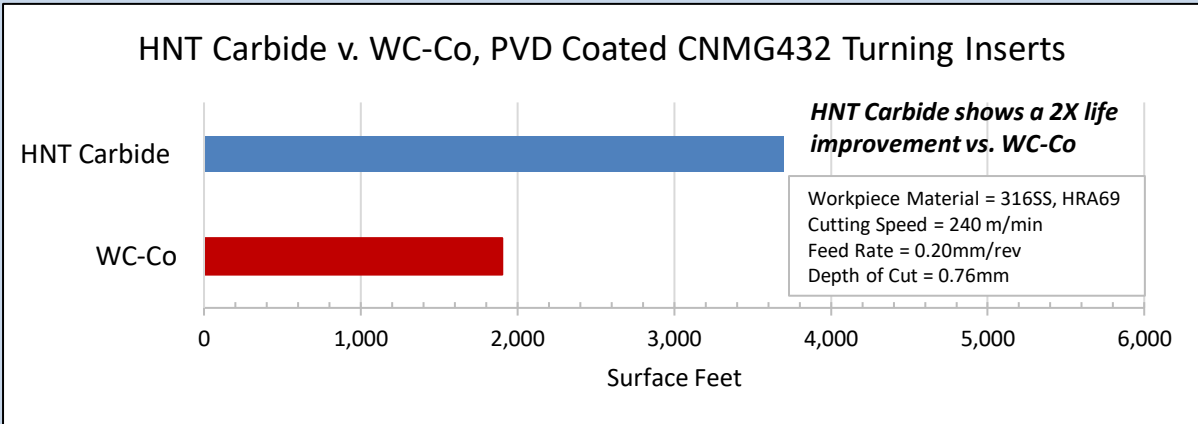
EternAloy® HNT Inserts and Insert Blanks are produced from high performance metallurgical powders that possess extreme combined hardness and toughness. EternAloy® HNT powders are created using patented, proprietary processes known as “Tough-Coated Hard Powder (TCHP)” process technology that provides material strength, durability and exceptional wear performance.



HNT Materials
 “Produced from EternAloy’s TCHP Technology”

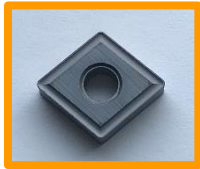


EternAloy® TCHP HNT Carbide provides increased tool life and higher productivity when compared to most popular tungsten carbide cutting tools.

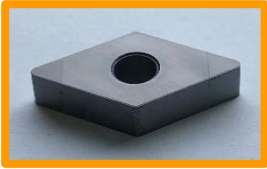


EternAloy® “Hard ‘N Tough”

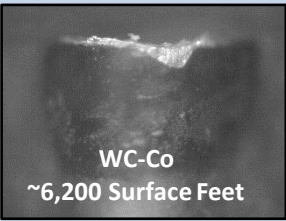
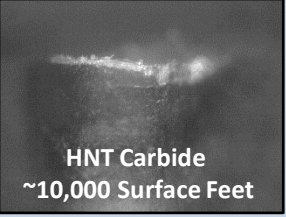
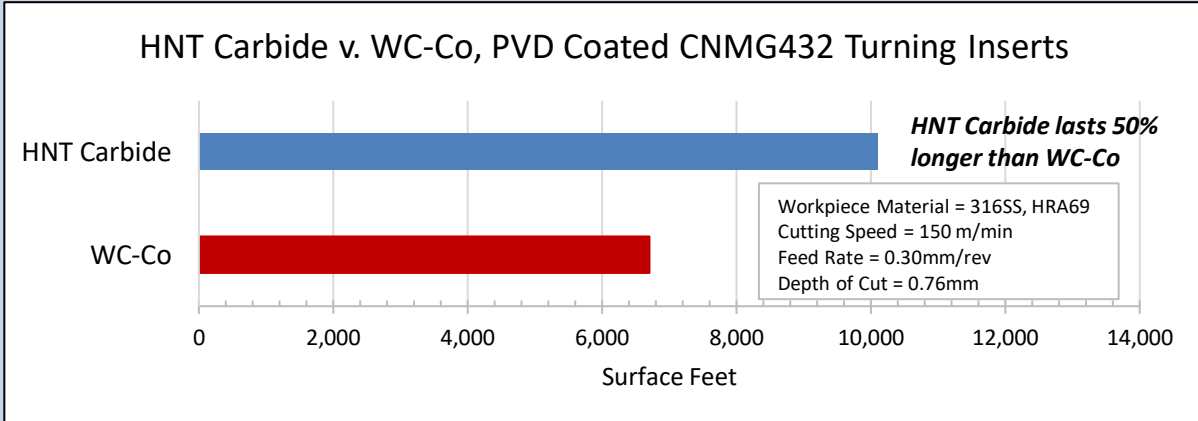
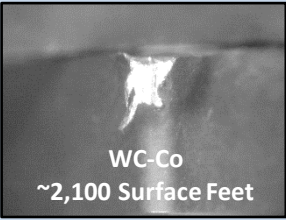
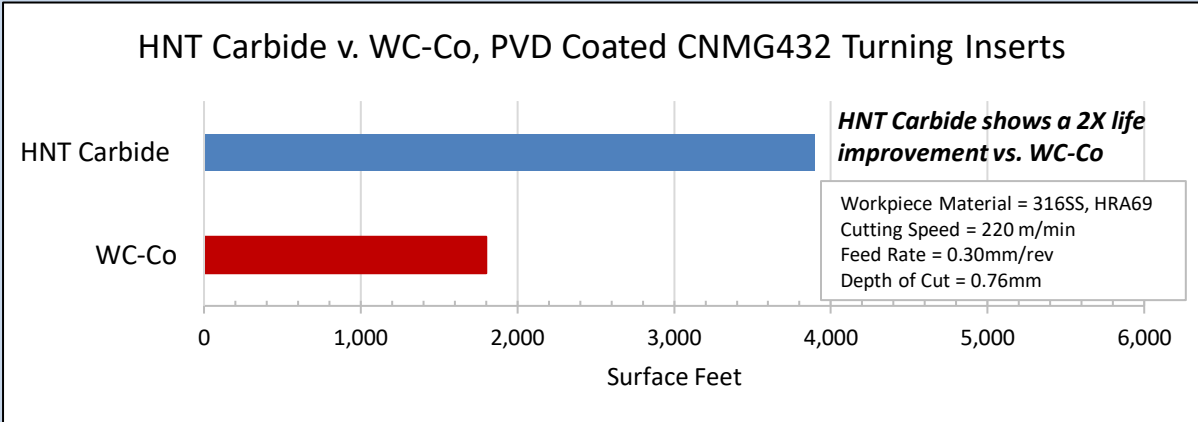
EternAloy® HNT Inserts and Insert Blanks are produced from high performance metallurgical powders that possess extreme combined hardness and toughness. EternAloy® HNT powders are created using patented, proprietary processes known as “Tough-Coated Hard Powder (TCHP)” process technology that provides material strength, durability and exceptional wear performance.



HNT Materials
 “Produced from EternAloy’s TCHP Technology”

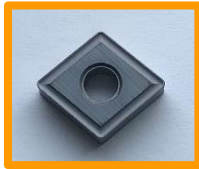


EternAloy® TCHP HNT Carbide provides increased tool life and higher productivity when compared to most popular tungsten carbide cutting tools.

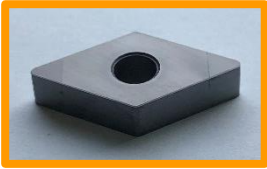


EternAloy® “Hard ‘N Tough”

EternAloy® HNT Inserts and Insert Blanks are produced from high performance metallurgical powders that possess extreme combined hardness and toughness. EternAloy® HNT powders are created using patented, proprietary processes known as “Tough-Coated Hard Powder (TCHP)” process technology that provides material strength, durability and exceptional wear performance.



HNT Materials
 “Produced from EternAloy’s TCHP Technology”



EternAloy® TCHP HNT Carbide provides increased tool life and higher productivity when compared to most popular tungsten carbide cutting tools.

